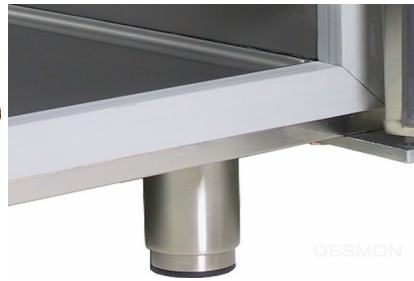
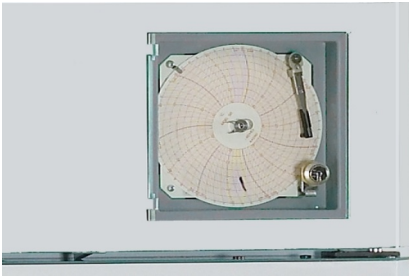


DS-GB14

desmonscientific.com/





STANDARD CONTROLLER FEATURES

End user interface	Display LED
Resolution (°C)	0,1
Maximum Number of Probes	3
Internal Led light	optional
Acoustic alarm	yes
Hot gas advanced defrost	yes

ALARMS AND FAILURES (ACOUSTIC AND VISUAL)

HACCP function	yes
"Power failure" Alarm	yes
"High / low temperature" Alarm	yes
"Open door" Alarm	yes
"Sensor fault" Alarm	yes
Clogged condenser Alarm	yes
Alarm recording (data logger of events - alarms)	yes

CONNECTIONS

RS 485 interface (not available if temperature data logger with USB port is installed)	optional
--	----------

SAFETY

Dry Contact for alarms remoting	yes
Freezing and overheating safety device	yes

OPTIONALS

Rechargeable back-up batteries	optional
Temperature datalogger with USB port	optional

STRUCTURE

Exterior dimensions WxDxH (mm)	1440x800x2120
Capacity (L)	1400
Interior dimensions WxDxH (mm)	1320x665x1520
Insulation (mm)	60
Temperature range (°C)	-10°-25°
Max. ambient temperature (°C)	43
Type of cooling unit	Monoblock
Power supply (V)	220V/240V
Frequency (Hz)	50
Power consumption (W)	780
Weight (KG)	185
Shipping weight (KG)	205
Shipping dimensions WxDxH (mm)	1500x860x2280
No. of compressors.	1
Doors	2
Automatic (smart) defrost and evaporation	yes
Castors	optional
Chart recorder	optional
Shelves (pcs)	6
Lock	yes
Interior material	s/steel AISI304
Exterior material	s/steel AISI304

Gas

R404a

Price: € 0,00